

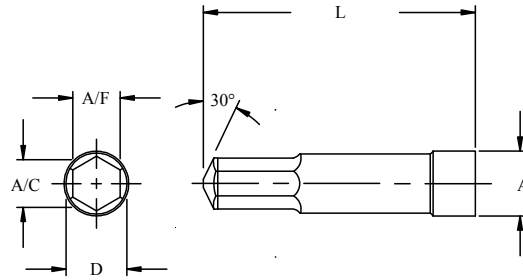
### **Straight Shank (Inch)**

Screw Size	Pin Number	A/F inch/mm	A/C inch/mm	D inch/mm	L inch/mm
2	HSP-1-2	.079/2.01	.091/2.32	.126/3.19	1.020/25.91
3	HSP-1-3	.079/2.01	.091/2.32	.126/3.19	1.020/25.91
4	HSP-1-4	.095/2.42	.110/2.79	.126/3.19	1.020/25.91
5	HSP-1-5	.095/2.42	.110/2.79	.126/3.19	1.020/25.91
6	HSP-1-6	.111/2.82	.128/3.26	.141/3.57	1.020/25.91
8	HSP-1-8	.143/3.62	.165/4.18	.176/4.47	1.020/25.91
10	HSP-1-10	.159/4.03	.184/4.65	.194/4.93	1.020/25.91
1/4	HSP-1-25	.190/4.83	.219/5.58	.229/5.82	1.375/34.92
1/3	HSP-1-31	.253/6.43	.292/7.42	.302/7.67	1.375/34.92
3/8	HSP-1-37	.316/8.03	.365/9.27	.378/9.59	1.375/34.92
4/9	HSP-1-23	.379/9.63	.438/11.12	.450/11.43	1.500/38.10
1/2	HSP-1-50	.379/9.63	.438/11.12	.450/11.43	1.500/38.10
5/8	HSP-1-62	.505/12.83	.583/14.81	.600/15.24	2.500/63.50
3/4	HSP-1-75	.631/16.03	.729/18.51	.750/19.05	3.000/76.20

### **Straight Shank (DIN 912)**

Screw Size	Pin Number	A/F inch/mm	A/C inch/mm	D inch/mm	L inch/mm
M3	HSP-1-M3	.102/2.58	.118/2.98	.197/4.99	1.417/36.00
M4	HSP-1-M4	.121/3.08	.140/3.56	.197/4.99	1.417/36.00
M5	HSP-1-M5	.161/4.10	.186/4.73	.236/5.99	1.417/36.00
M6	HSP-1-M6	.202/5.14	.233/5.94	.275/6.99	1.417/36.00
M8	HSP-1-M8	.242/6.14	.279/7.01	.295/7.49	1.417/36.00
M10	HSP-1-M10	.322/8.18	.372/9.45	.394/10.00	1.417/36.00
M12	HSP-1-M12	.401/10.18	.463/11.75	.472/11.99	1.417/36.00
M14	HSP-1-M14	.481/12.21	.555/14.10	.570/14.48	1.850/47.00
M16	HSP-1-M16	.560/14.21	.647/16.41	.669/16.98	1.850/47.00
M20	HSP-1-M20	.678/17.23	.783/19.90	.787/20.00	1.850/47.00
M24	HSP-1-M24	.758/19.23	.875/22.20	.945/24.00	1.850/47.00

1. Available in M2 at 62-64 RC, and M42 materials at 63-65 RC.
2. Special materials and designs also available per quote.
3. PVD Coatings available.



**Button Shank (Inch)**

Screw Size	Pin Number	A/F inch/mm	A inch/mm	D inch/mm	L inch/mm
2	HSP-2-2	.079/2.01	.187/4.75	.126/3.19	1.020/25.91
3	HSP-2-3	.079/2.01	.187/4.75	.126/3.19	1.020/25.91
4	HSP-2-4	.095/2.42	.187/4.75	.126/3.19	1.020/25.91
5	HSP-2-5	.952/2.42	.187/4.75	.126/3.19	1.020/25.91
6	HSP-2-6	.111/2.82	.218/5.54	.141/3.57	1.020/25.91
8	HSP-2-8	.143/3.62	.218/5.54	.176/4.47	1.020/25.91
10	HSP-2-10	.159/4.03	.250/6.35	.194/4.93	1.020/25.91
1/4	HSP-2-25	.190/4.83	.281/7.14	.229/5.82	1.375/34.92
1/3	HSP-2-31	.253/6.43	.343/8.71	.302/7.67	1.375/34.92
3/8	HSP-2-37	.316/8.03	.437/11.10	.378/9.59	1.375/34.92
4/9	HSP-2-23	.379/9.63	.500/12.70	.450/11.43	1.500/38.10
1/2	HSP-2-50	.379/9.63	.500/12.70	.450/11.43	1.500/38.10
5/8	HSP-2-62	.505/12.83	.656/16.66	.600/15.24	2.500/63.50
3/4	HSP-2-75	.631/16.03	.812/20.62	.750/19.05	3.000/76.20

**Button Shank (DIN 912)**

Screw Size	Pin Number	A/F inch/mm	A inch/mm	D inch/mm	L inch/mm
M3	HSP-2-M3	.102/2.58	.197/5.00	.138/3.50	1.024/26.00
M4	HSP-2-M4	.121/3.08	.217/5.51	.158/4.00	1.024/26.00
M5	HSP-2-M5	.161/4.10	.260/6.60	.203/5.15	1.810/30.00
M6	HSP-2-M6	.202/5.14	.312/7.93	.250/6.35	1.417/36.00
M8	HSP-2-M8	.242/6.14	.354/8.98	.294/7.50	1.417/36.00
M10	HSP-2-M10	.322/8.18	.445/11.30	.388/9.85	1.417/36.00
M12	HSP-2-M12	.401/10.18	.539/13.69	.478/12.15	1.575/40.00
M14	HSP-2-M14	.481/12.21	.630/16.00	.571/14.50	1.969/50.00
M16	HSP-2-M16	.560/14.21	.728/18.49	.661/16.80	2.362/60.00
M20	HSP-2-M20	.678/17.23	.945/24.00	.787/20.00	2.362/60.00
M24	HSP-2-M24	.758/19.23	1.102/28.00	.945/24.00	2.756/70.00

1. Available in M2 at 62-64 RC, and M42 materials at 63-65 RC.
2. Special materials and designs also available per quote.
3. PVD Coatings available.